

User Guide

Product Features

- USB Specification Rev. 1.1 compliant
- Support the RS232 Serial interface
- Over 1Mbps data transfer rate
- Support remote wake-up and power management

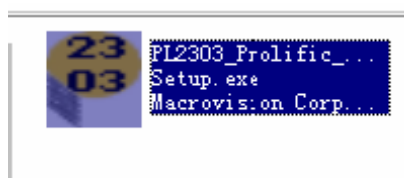
System Requirements

- IBM PC 486DX4-100 MHz CPU or higher or compatible system
- Available USB port
- CD-ROM drive
- Windows98/2000/xp/vista/7.0

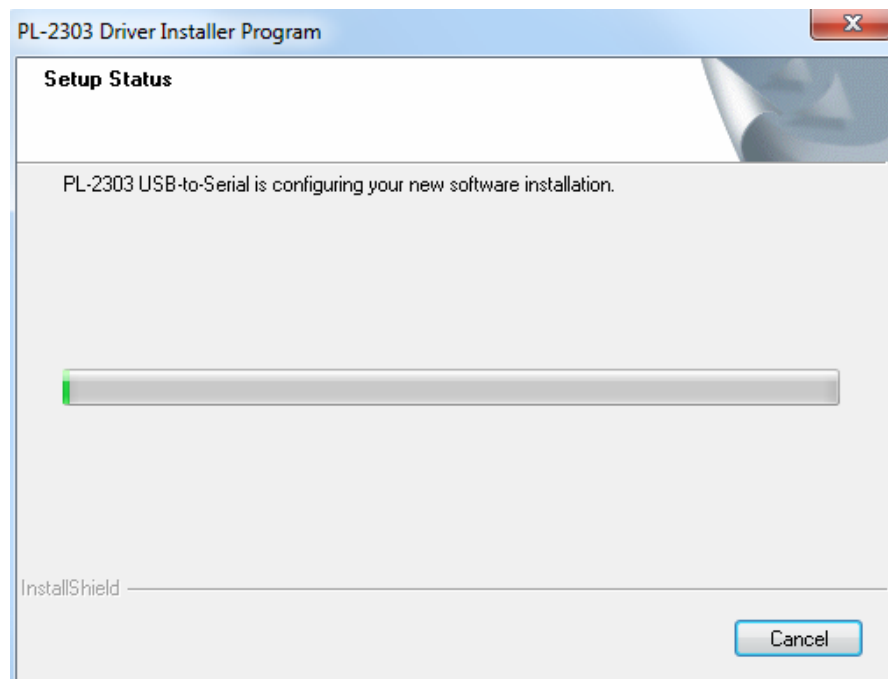
Driver Installation (windows7.0)

Follow the steps below to install Window 7.0 driver of USB TO RS232

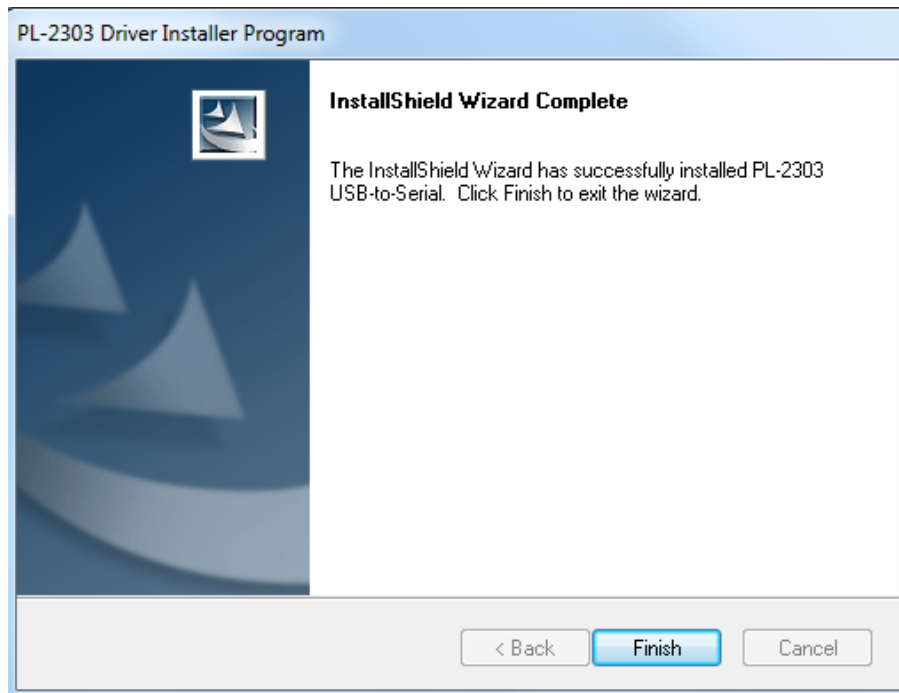
1. Power on your computer and make sure that the USB port is enabled and working properly.
2. During installation , please don't link USB TO RS232 with your computer .
3. Double click ' PL2303_Prolific setup.exe ', then it will start install



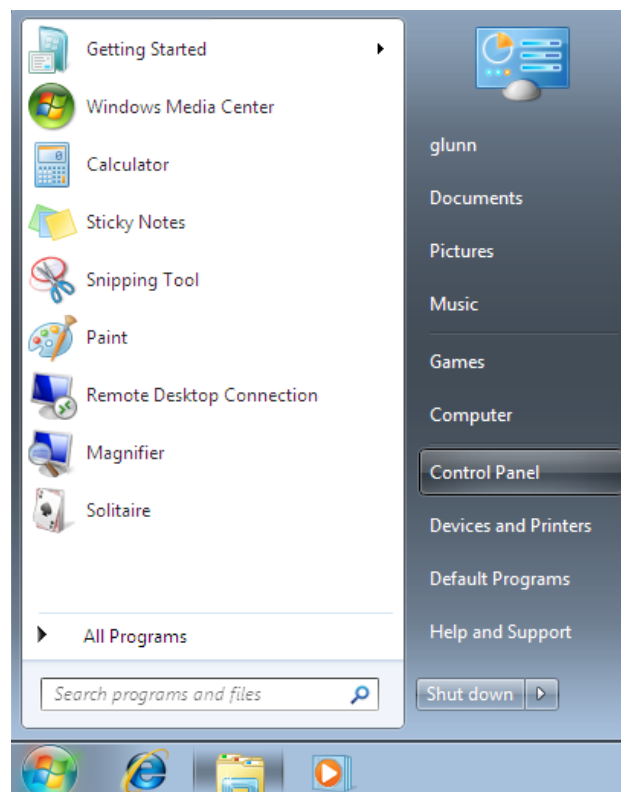
4. When the installation has finished a completion screen is displayed.



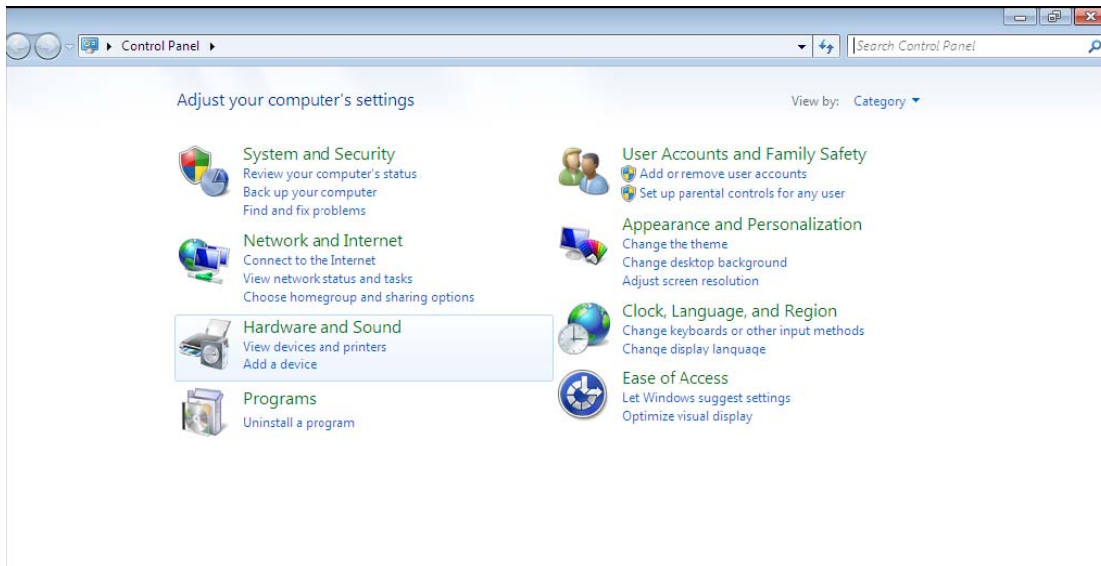
5. After installation , click ‘ Finish ’



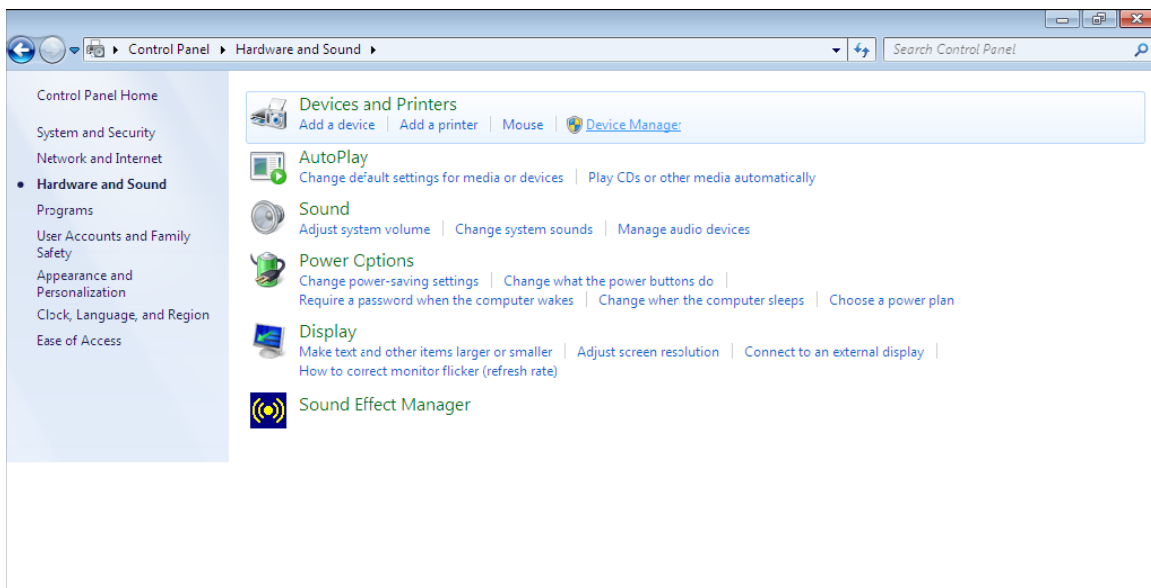
6. Plug in the USB TO RS232 into the USB port and Press the Windows start button to bring up the start menu and select “**Control Panel**”.



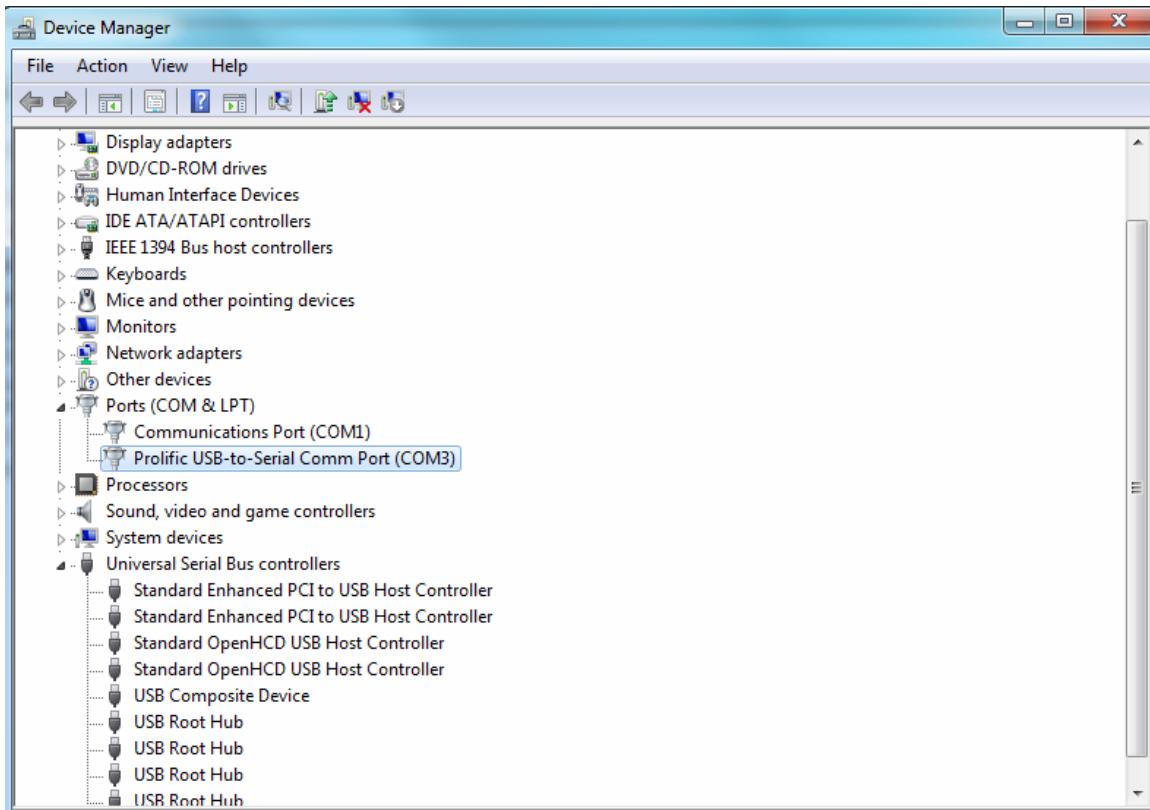
7. From the Control Panel window select Hardware and Sound



8. At the next screen select Device Manager:



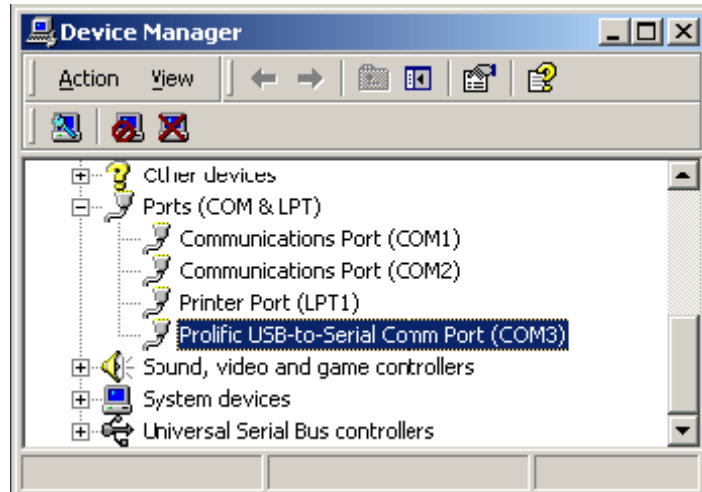
9. You can to check the Device Manager and see the Prolific USB to Serial Comm Port)



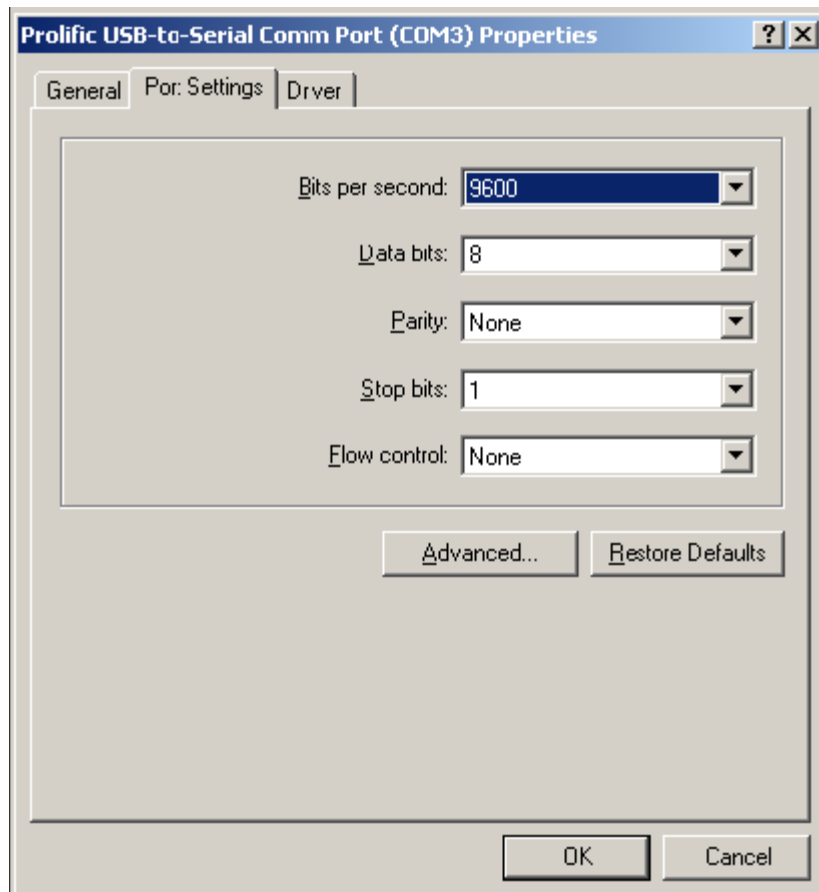
NOTE: Not all devices will install to COM3. The COM port allocation is determined by the installation wizard on the basis of the next free com port as designated in the PC registry.

Changes COM Port

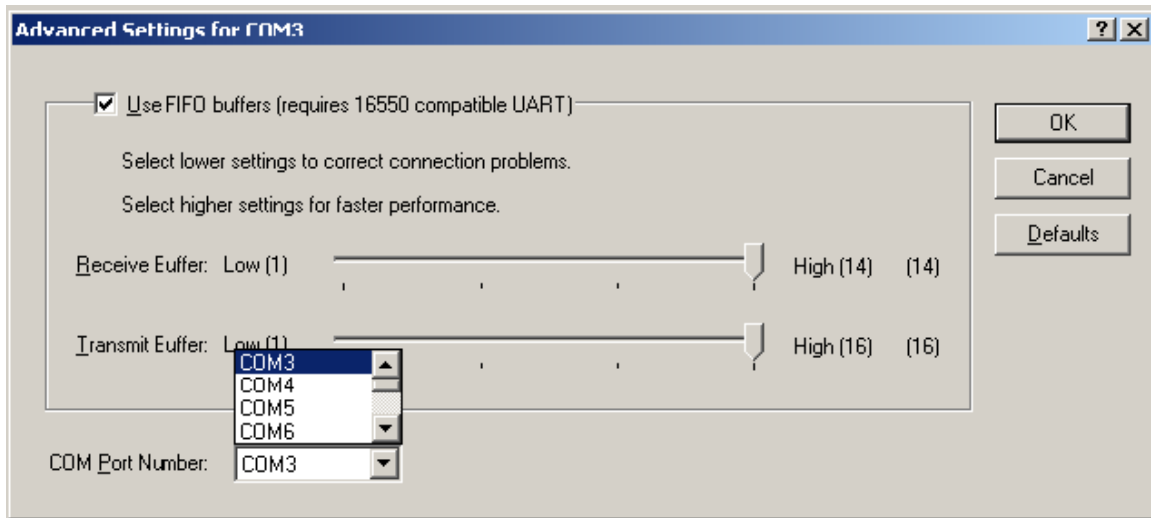
(1), Please click on the **Device Manager\\ ports (COM & LPT)**.



(2), Doubly click on “Prolific USB-to- serial Comm port(COM3)” .And it could go to ‘ properties’.



(3), Please choose "**Port Settings** ", and then click on "**Advanced**". Please kindly choose the needed com, and click on" **ok**".



Notice:

If the Modem could not link with the new port, and run smoothly when changed the port, please kindly unload Modem, and re-install it. When Changing the port, the peripheral equipment could not shift to the new port, and run smoothly. Under this situation, please kindly unload the equipment and install again.